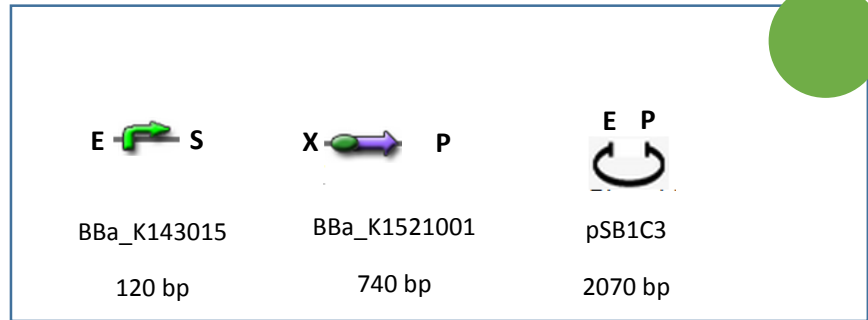


Assembly:



1st Day

EXSP Digestion (see **Enzymatic Digestion Protocol**)

Parts	ng/ul	Volume to 2,5 ug (ul)	Buffer x10 (ul)	EcoRI (ul)	XbaI (ul)	SpeI (ul)	PstI (ul)	H ₂ O to 50ul (ul)
BBa_K143015	270,0	4 ug = 15,0	5	1,5	-	1,5	-	27
BBa_K1521001	126,0	20,0	5	-	1	-	1	23
pSB1C3	107,3	24,3	5	1	-	-	1	20,7

Repeat this digestion only if you run out of stock

2nd Day

Gel Purification

- See **Kit Wizard SV gel and PCR clean up Promega Protocol**
- Quantify digestion products

Parts	ng/ul	260/280
BBa_K143015 (ES)	13,4	1,72
BBa_K1521001 (XP)	18,6	1,87
pSB1C3 (EP)	24,3	2,83

Obs: 260/280 is a quality parameter that tells you if your sample is contaminated with proteins. The greater it is compared to 1 the less contaminants you have.

Ligation (see **Ligation Protocol**)

Linear Plasmid 50 ng	2 ul	
Insert : Plasmid 5:1 (BBa_K143015) ; 3:1 (BBa_K1521001)	BBa_K143015	BBa_K1521001
	3 ul	3 ul
10x T4 DNA Buffer	2 ul	
T4 DNA ligase 1u	1 ul	
H ₂ O to 20 ul	9 ul	

Obs: To determinate the amount of DNA necessary we used the following equation

$$\text{Insert ng} = \text{plasmid ng} \times \frac{\text{insert bp}}{\text{plasmid bp}} \times \text{insert:plasmid ratio}$$

- Incubate overnight at 37°C.
- Prepare and sterilize in the autoclave tubes with 6 ml of liquid LB medium
- Prepare glycerol 40%

3rd Day

Transformation (see **Transformation Protocol in *Escherichia coli* DH5-α**)

Organism: *E. coli* DH5-α

Selection: Cloranphenicol

4th Day

- Inoculate 3 – 4 colonies in a 6 ml LB with the same antibiotic used in the transformation protocol.
- Incubate overnight at 275rpm/37°C.

5th Day

Miniprep

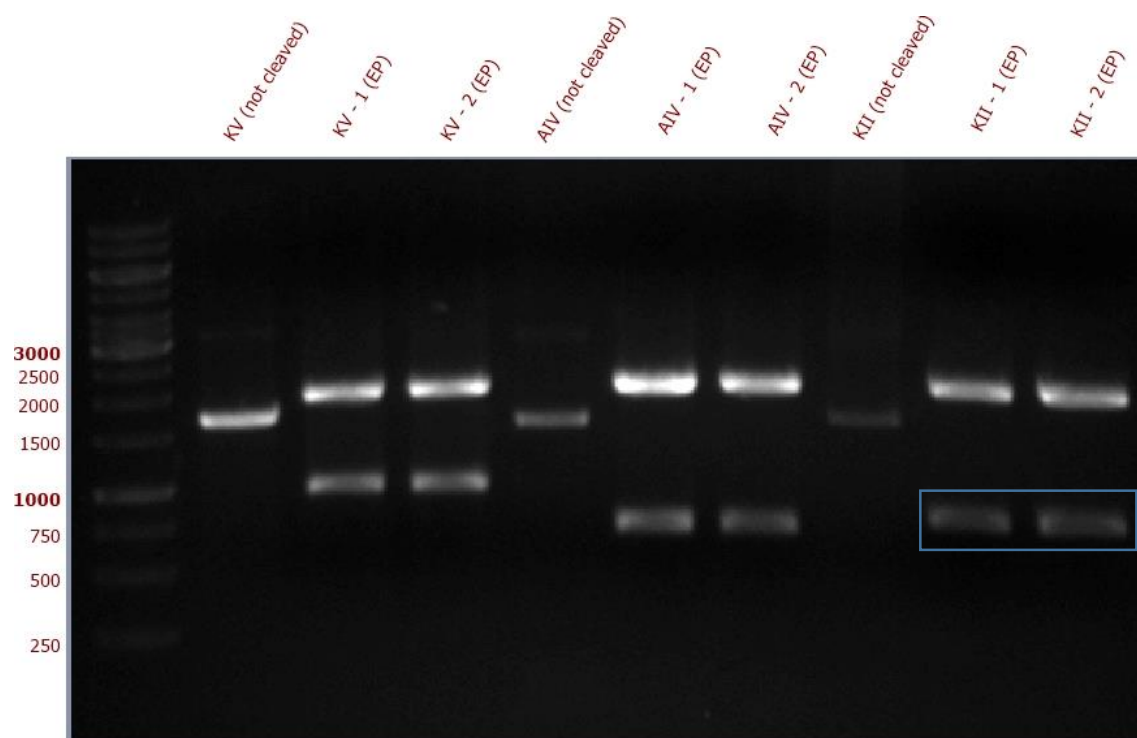
- Prepare **glycerol stock** of the clones (500ul glycerol 40% + 500ul inoculum).
- Extract plasmidial DNA (see **Alkaline Lyses or PureLink Invitrogen Protocol**)
- Run a preliminary electrophoresis gel.
- Quantify DNA samples.

Assembly Confirmation

- EP Digestion (see **Enzymatic Digestion Protocol**)

Assembly	Volume to 300 ng (ul)	Buffer x10 (ul)	EcoRI (ul)	PstI (ul)	H ₂ O to 10ul (ul)
KII – 1	1,5	1	0,5	0,5	6,5
KII – 2	1,5	1	0,5	0,5	6,5

- Incubate for 2 hours at 37°C.
- Prepare samples for DNA sequencing.
- Run an electrophoresis analysis of the EP digestion



Size expected	Size in gel
860 bp	~800 bp